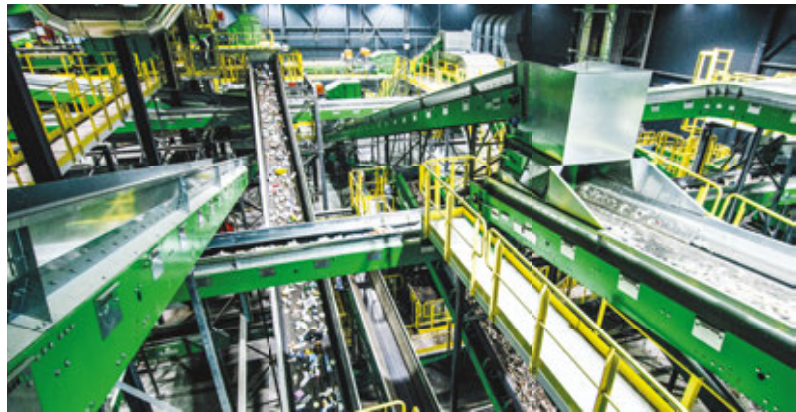


OUR REFERENCES

STATUS SEPTEMBER 2024



ALL FROM ONE COMPANY – FROM THE DESIGN TO COMMISSIONING

Some references

| | |
|--|----|
| 1. Mechanical-biological waste treatment (MBT) 3 plus Municipal solid waste (MSW) treatment | 3 |
| 2. Plastic and packaging waste 12 Sorting plants for packaging waste, plastic treatment | 12 |
| 3. MRF (Material Recovery Facilities) 19 Sorting plants for dry valuable substances from domestic waste | 19 |
| 4. Refuse derived fuel (RDF)..... 25 Treatment plants for refuse derived fuel (SRF/RDF) | 25 |
| 5. Commercial and industrial waste (C+I), mixed building debris, bulky waste 32 Treatment plants for commercial and industrial waste, mixed building debris, bulky waste | 32 |
| 6. Waste paper treatment..... 37 Sorting plants for waste paper and cardboard | 37 |
| 7. Domestic waste, SRF/RDF before thermal treatment 40 Pre-sorting facilities before thermal treatment | 40 |
| 8. Slag and bottom ash from incineration 42 Bottom ash treatment | 42 |
| 9. Composting plants..... 46 | 46 |
| 10. Fermentation plants..... 56 | 56 |
| 11. Wood treatment plants 58 | 58 |
| 12. Conveying equipment..... 60 | 60 |



**MECHANICAL-BIOLOGICAL
WASTE TREATMENT (MBT)
PLUS MUNICIPAL SOLID WASTE (MSW) TREATMENT**



Municipal sorting waste plant Fredrikstad, Norway

| | |
|----------------|---|
| Location | Fredrikstad, Norway |
| Plant | Mechanical waste treatment of MSW |
| Plant capacity | 120,000 Mg/a |
| Commissioning | 2025 |
| Client | Østfold Avfallssortering, Fredrikstad, Norway |

Waste management plant Olszowa, Poland

| | |
|----------------|---|
| Location | Olszowa, Poland |
| Plant | Mechanical and biological waste treatment of MSW |
| Plant capacity | 50,000 Mg/a |
| Commissioning | 2022 |
| Client | Zakład Zagospodarowania Odpadów Olszowa Sp. z o.o., Olszowa, Poland |

Municipal sorting waste plant Stockholm, Sweden

| | |
|----------------|-----------------------------------|
| Location | Stockholm, Sweden |
| Plant | Mechanical waste treatment of MSW |
| Plant capacity | 140,000 Mg/a / 45 Mg/h |
| Commissioning | 2020 |
| Client | SÖRAP, Stockholm, Sweden |

Waste management centre Bielsko-Biala, Poland

| | |
|----------------|--|
| Location | Bielsko-Biała, Poland |
| Plant | Mechanical waste treatment of MSW |
| Plant capacity | 75,000 Mg/a |
| Modernization | 2019 |
| Commissioning | 2012 |
| Client | Zakład Gospodarki Odpadami S.A., Bielsko-Biała, Poland |

Waste management centre **Radom, Poland**

| | |
|----------------|--|
| Location | Radom, Poland |
| Plant | Household waste treatment System BioFIX |
| Plant capacity | Sorting plant: 210,000 Mg/a Composting plant: 42,000 Mg/a |
| Modernization | 2019 |
| Commissioning | 2008 |
| Client | PPUH RADKOM, Radom, Poland |

Municipal sorting waste plant **Brześć Kujawski, Poland**

| | |
|----------------|---|
| Location | Brześć Kujawski, Poland |
| Plant | Mechanical waste treatment of MSW |
| Plant capacity | 60,000 Mg/a mixed MSW 5,000 – 6,000 Mg/a presorted waste |
| Modernization | 2018 |
| Client | Przedsiębiorstwo Gospodarki Odpadami, Kujawski, Poland |

Municipal sorting waste plant **Kharkiv, Ukraine**

| | |
|----------------|---|
| Location | Kharkiv, Ukraine |
| Plant | Procurement of construction on municipal solid waste, treatment facility including system of landfill gas collection and power generation |
| Plant capacity | 80,000 Mg/a MSW 40,000 Mg/a presorted waste |
| Modernization | 2018 |
| Client | Utility Company “Kharkiv Municipal Company for Waste Management”, Kharkiv, Ukraine |

Municipal sorting waste plant **Bydgoszcz, Poland**

| | |
|----------------|---------------------------------|
| Location | Bydgoszcz, Poland |
| Plant | Municipal solid waste treatment |
| Plant capacity | 20 Mg/h presorted waste |
| Modernization | 2018 |
| Client | ProNatura, Bydgoszcz, Poland |

Municipal sorting waste plant Stavanger, Norway

| | |
|----------------|--|
| Location | Stavanger, Norway |
| Plant | Municipal solid waste treatment for receipt of recyclables |
| Plant capacity | 40 Mg/h MSW 14 Mg/h Paper |
| Commissioning | 2018 |
| Client | IVAR, Stavanger, Norway |

Waste management centre Krakow, Poland

| | |
|----------------|--|
| Location | Krakow, Poland |
| Plant | Mechanical waste treatment of MSW |
| Plant capacity | 55,000 Mg/a 9,000 Mg/a glas |
| Modernization | 2018 |
| Commissioning | 2013 |
| Client | Miejskie Przedsiębiorstwo Oczyszczania, Krakow, Poland |

Waste management centre Kielce, Poland

| | |
|----------------|---|
| Location | Promnik near Kielce, Poland |
| Plant | Municipal solid waste treatment Composting System BioFIX |
| Plant capacity | Sorting plant: 29 Mg/h, 100,000 Mg/a Composting plant: 25,000 Mg/a |
| Commissioning | 2016 |
| Client | Przedsiębiorstwo Gospodarki Odpadami Kielce, Poland |

Waste management centre Gać, Poland

| | |
|----------------|--|
| Location | Gać, Poland |
| Plant | Mechanical waste treatment of MSW |
| Plant capacity | 60,000 Mg/a |
| Commissioning | 2003, 2010 and 2015 |
| Client | Zakład Gospodarowania Odpadami Gać, Poland |

Waste management centre **Tychy, Poland**

| | |
|----------------|---|
| Location | Tychy, Poland |
| Plant | Municipal solid waste treatment |
| Plant capacity | Sorting plant: 22 Mg/h, 78,000 Mg/a |
| Commissioning | 2014 |
| Client | Master-Waste and Energia Tychy, Poland |

Waste management centre **Tczew, Poland**

| | |
|----------------|---|
| Location | Tczew, Poland |
| Plant | Household waste treatment Composting System BioFIX |
| Plant capacity | Sorting plant: 75,000 Mg/a Composting plant: 35,000 Mg/a |
| Commissioning | 2013 |
| Client | Zakład Utylizacji Odpadów Stałych Tczew, Poland |

Waste management centre **Ostroda, Poland**

| | |
|----------------|---|
| Location | Rudno near Ostróda, Poland |
| Plant | Household waste treatment Composting System BIODEGMA |
| Plant capacity | Sorting plant: 65,000 Mg/a Composting plant: 27,000 Mg/a |
| Commissioning | 2013 |
| Client | Zakład Odpadów Komunalnych Rudno, Rudno, Poland |

Waste management centre **Elbląg, Poland**

| | |
|----------------|---|
| Location | Elbląg, Poland |
| Plant | Household waste treatment Composting System BIODEGMA |
| Plant capacity | Sorting plant: 75,000 Mg/a Composting plant: 28,000 Mg/a |
| Commissioning | 2012 |
| Client | Zakład Utylizacji Odpadów, Elbląg, Poland |

Sorting plant **Baku, Azerbaijan**

| | |
|----------------|------------------------------|
| Location | Baku, Azerbaijan |
| Plant | Sorting plant for MSW |
| Plant capacity | 80,000 Mg/a |
| Commissioning | 2012 |
| Client | Adelmann, Karlstadt, Germany |

Waste management centre **Sosnowiec, Poland**

| | |
|----------------|---|
| Location | Sosnowiec, Poland |
| Plant | Household waste treatment |
| Plant capacity | Sorting plant: 70,000 Mg/a Composting plant: 13,000 Mg/a |
| Commissioning | 2012 |
| Client | Składowania Odpadów, Sosnowiec, Poland |

Waste management centre **Rudno, Poland**

| | |
|----------------|---|
| Location | Rudno, Poland |
| Plant | Household waste treatment |
| Plant capacity | Sorting plant: 60,000 Mg/a Composting plant: 27,000 Mg/a |
| Commissioning | 2012 |
| Client | Komunalnych Rudno, Rudno, Poland |

Waste management centre **Białystok, Poland**

| | |
|----------------|--|
| Location | Studzianki near Białystok, Poland |
| Plant | Mechanical waste treatment of MSW |
| Plant capacity | 100,000 Mg/a |
| Commissioning | 2011 |
| Client | P.P.U.H. Czyściochin Białystok, Poland |

Pre-treatment plant **Linz, Austria**

| | |
|----------------|--|
| Location | Linz, Austria |
| Plant | Mechanical treatment of residuals of MBT, industrial waste, household waste before thermal treatment |
| Plant capacity | 225,000 Mg/a |
| Commissioning | 2011 |
| Client | Linz Strom, Austria |

Waste management centre **Elk, Poland**

| | |
|----------------|--|
| Location | Siedliska near Elk, Poland |
| Plant | Household waste treatment Composting System BioFIX Sorting plant: 35,000 Mg/a Composting plant: 21,000 Mg/a |
| Plant capacity | 24.5 Mg/h |
| Commissioning | 2010 |
| Client | Przedsiębiorstwo Gospodarki Odpadami "EKO-Mazury" in Siedliska, Elk, Poland |

Waste management centre **Warsaw, Poland**

| | |
|----------------|--|
| Location | Warsaw, Poland |
| Plant | Mechanical waste treatment of MSW |
| Plant capacity | 225,000 Mg/a (per 3 shifts) |
| Commissioning | 2010 |
| Client | Byś-Wojciech Byśkiniewicz, Warszawa, Poland |

Waste management centre **Kalisz, Poland**

| | |
|----------------|--|
| Location | Orli Staw near Kalisz, Poland |
| Plant | Household waste treatment System BioFIX |
| Plant capacity | Composting plant: 80,000 Mg/a |
| Commissioning | 2006 |
| Client | Związek Komunalny Gmin "Czyste Miasto, Czysta Gmina", Kalisz, Poland |

Waste management centre **Großefehn, Germany**

| | |
|----------------|---|
| Location | Großefehn, Lower Saxony, Germany |
| Plant | Household, industrial and bulky waste |
| Plant capacity | 30 Mg/h |
| Commissioning | 2005 |
| Client | Heilit Umwelttechnik, Düsseldorf, Germany |

AEZ **Erbenschwang, Germany**

| | |
|----------------|---|
| Location | Erbenschwang, Bavaria, Germany |
| Plant | Mechanical Treatment of Residual waste System BioFIX |
| Plant capacity | 40,000 Mg/a |
| Commissioning | First commissioning 1997, modification 2005 |
| Client | Erbenschwanger Verwertungs- und Abfallentsorgungs-Gesellschaft, Schongau, Germany |

Mechanical-biological waste treatment plant **Neuss, Germany**

| | |
|----------------|--|
| Location | Neuss, North Rhine-Westphalia, Germany |
| Plant | MBT |
| Plant capacity | 206,000 Mg/a |
| Commissioning | 2001 |
| Client | EGN, Grevenbroich, Germany |

Waste management centre **Singhofen, Germany**

| | |
|----------------|--|
| Location | Singhofen, Rhineland-Palatinate, Germany |
| Plant | Mechanical and biological waste treatment |
| Plant capacity | 45 Mg/h |
| Commissioning | 2000 |
| Client | Rhein-Lahn-Kreis Abfallwirtschaft, Bad Ems, Germany |

Waste management centre Bassum, Germany

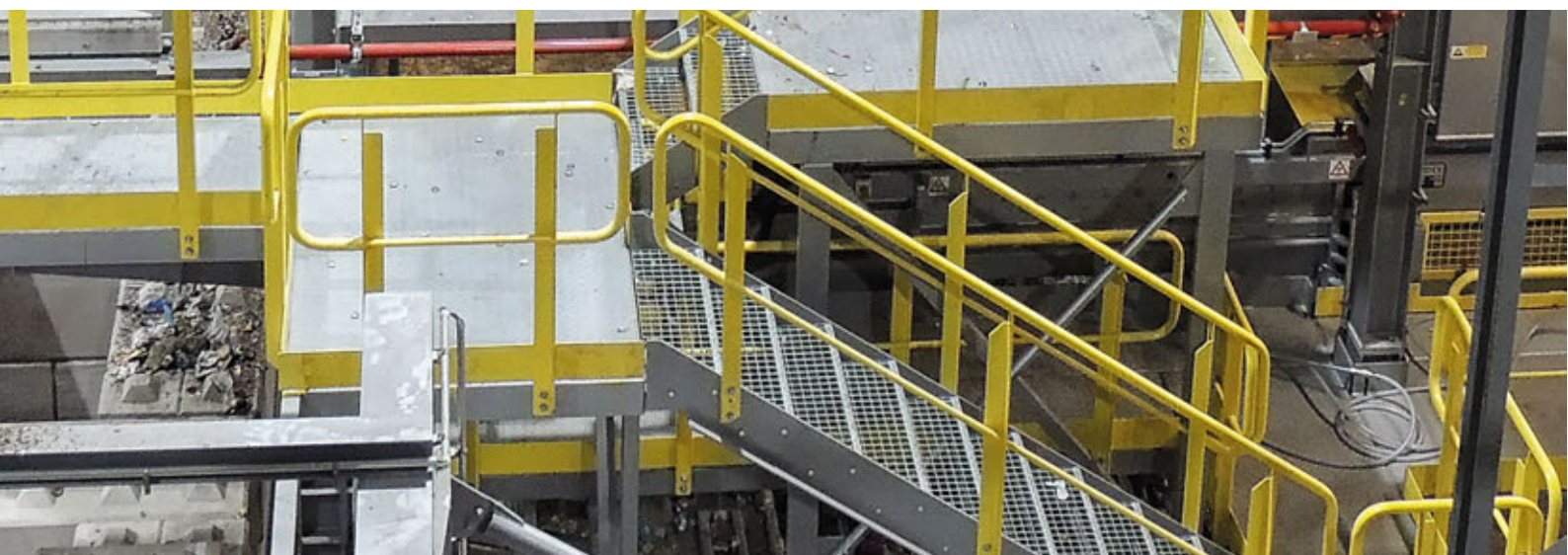
| | |
|----------------|---|
| Location | Bassum, Lower Saxony, Germany |
| Plant | Mechanical and biological waste treatment |
| Plant capacity | 60,000 Mg/a |
| Commissioning | 1997 |
| Client | Sotec, Saarbrücken, Germany |

Waste management centre Düren, Germany

| | |
|----------------|--|
| Location | Düren-Horm, North Rhine-Westphalia, Germany |
| Plant | Mechanical and biological waste treatment |
| Plant capacity | 180,000 Mg/a |
| Commissioning | 1995 |
| Client | Dürener Deponiegesellschaft (DDG), Düren, Germany |



PLASTIC AND PACKAGING WASTE SORTING PLANTS FOR PACKAGING WASTE, PLASTIC TREATMENT



Sorting plant for plastics **Krefeld, Germany**

| | |
|---------------|---|
| Location | Krefeld, Germany |
| Plant | Sorting of packaging waste from MSW |
| Capacity | 8.5 Mg/h |
| Commissioning | 2025 |
| Client | EGN Entsorgungsgesellschaft Niederrhein, Viersen, Germany |

LWP-Sorting plant **Enns, Austria**

| | |
|---------------|--|
| Location | Enns, Austria |
| Plant | Sorting plant for light weight packaging (LWP) |
| Capacity | 100,000 Mg/a |
| Commissioning | 2024 |
| Client | Bernegger / ARA / Grüner Punkt, Enns, Austria |

LWP-Sorting plant **Oslo, Norway**

| | |
|---------------|----------------------------------|
| Location | Oslo, Norway |
| Plant | Sorting plant for MSW / plastics |
| Capacity | 20 Mg/h |
| Commissioning | 2024 |
| Client | Plastretur, Oslo, Norway |

Sorting plant for plastics **Bochum, Germany**

| | |
|---------------|-------------------------------|
| Location | Bochum, Germany |
| Plant | Sorting plant for plastics |
| Capacity | 6 Mg/h |
| Commissioning | 2023 |
| Client | RE Plano GmbH, Lünen, Germany |

Plastic Recycling Facility **Site Zero, Motala, Sweden**

| | |
|----------------|--|
| Location | Motala, Sweden |
| Plant | Second plant in Motala, sorting plant for packaging waste, 12 different output fractions |
| Plant capacity | 200,000 Mg/a (together with the first plant) |
| Commissioning | 2023 (first plant 2019) |
| Client | Svensk Plaståtervinning, Motala, Sweden |

LWP-Sorting plant Vechta, Germany

| | |
|----------------|-----------------------------------|
| Location | Vechta, Germany |
| Plant | Film sorting in various fractions |
| Plant capacity | 7 Mg/h, 3-shift operation |
| Commissioning | 2021 |
| Client | SL Recycling, Vechta, Germany |

PDM Sorting Zwolle, The Netherlands

| | |
|----------------|--|
| Location | Zwolle, The Netherlands |
| Plant | PDM Sorting |
| Plant capacity | 110,000 Mg/a |
| Commissioning | 2019 |
| Client | PreZero Wertstoffmanagement Porta Westfalica, Germany |

Modification LWP-Sorting plant Oppin, Germany

| | |
|----------------|--|
| Location | Oppin, Saxony-Anhalt, Germany |
| Plant | Sorting plant for light weight packaging (LWP) |
| Plant capacity | 15 Mg/h |
| Modernisation | 2019 |
| Commissioning | 2008 |
| Client | Tönsmeier Service, Porta Westfalica, Germany |

Treatment plant for plastics from refrigerators Lünen, Germany

| | |
|----------------|---|
| Location | Lünen, North Rhine-Westphalia, Germany |
| Plant | Treatment plant for plastics from refrigerators |
| Plant capacity | 3 Mg/h |
| Commissioning | 2018 |
| Client | RePlano, Lünen, Germany |

LWP-Sorting plant Swisttal, Germany

| | |
|----------------|--|
| Location | Swisttal, North Rhine-Westphalia, Germany |
| Plant | Sorting plant for light weight packaging (LWP) |
| Plant capacity | 21 Mg/h |
| Commissioning | 2018 |
| Client | Hündgen Entsorgungs, Swisttal, Germany |

Sorting plant for light weight packaging **Gernsheim, Germany**

| | |
|----------------|--|
| Location | Gernsheim, Hesse, Germany |
| Plant | Sorting plant for light weight packaging (LWP) |
| Plant capacity | 22 Mg/h |
| Commissioning | 2018 |
| Client | Meilo, Gernsheim, Germany |

Automatic sorting plant, **Singapore**

| | |
|----------------|--|
| Location | Singapore |
| Plant | Sorting plant for light weight packaging (LWP) |
| Plant capacity | 10 Mg/h |
| Commissioning | 2014 |
| Client | Colex, Singapore |

Automatic sorting plant **Iserlohn, Germany**

| | |
|----------------|--|
| Location | Iserlohn, North Rhine-Westphalia, Germany |
| Plant | Sorting plant for light weight packaging (LWP) |
| Plant capacity | 18 Mg/h |
| Commissioning | 2014 |
| Client | Lobbe, Iserlohn, Germany |

Automatic sorting plant **Bochum, Germany**

| | |
|----------------|--|
| Location | Bochum, North Rhine-Westphalia, Germany |
| Plant | Sorting plant for light weight packaging (LWP) |
| Plant capacity | 12 Mg/h |
| Commissioning | 2010 |
| Client | Remondis, Lünen, Germany |

Automatic sorting plant **Soltau, Germany**

| | |
|----------------|--|
| Location | Soltau, Lower Saxony, Germany |
| Plant | Sorting plant for light weight packaging (LWP) |
| Plant capacity | 8 Mg/h |
| Commissioning | 2007 |
| Client | Abfallbeseitigung H.Cohrs, Soltau, Germany |

Automatic sorting plant Würzburg, Germany

| | |
|----------------|--|
| Location | Würzburg, Bavaria, Germany |
| Plant | Sorting plant for light weight packaging (LWP) |
| Plant capacity | 7 Mg/h |
| Commissioning | 2007 |
| Client | Würzburger Recycling, Germany |

Modification sorting plant Detmold, Germany

| | |
|----------------|---|
| Location | Detmold, North Rhine-Westphalia, Germany |
| Plant | Sorting plant for light weight packaging (LWP) |
| Plant capacity | 8 Mg/h |
| Commissioning | 2006 |
| Client | DST-Wertstoffsartierung & Recycling Detmold, Germany |

Automatic sorting plant Karditsa, Greece

| | |
|----------------|------------------------------------|
| Location | Karditsa, Greece |
| Plant | Sorting plant for commingled waste |
| Plant capacity | 5 Mg/h |
| Commissioning | 2005 |
| Client | HE.R.R.Co., Kifissia, Greece |

Modification sorting plant Herne, Germany

| | |
|----------------|--|
| Location | Herne, North Rhine-Westphalia, Germany |
| Plant | Sorting plant for light weight packaging (LWP) |
| Plant capacity | 12 Mg/h |
| Commissioning | 2005 |
| Client | Veolia, Herne, Germany |

Modification automatic sorting plant Breinermoor, Germany

| | |
|----------------|--|
| Location | Breinermoor, Lower Saxony, Germany |
| Plant | Sorting plant for light weight packaging (LWP) |
| Plant capacity | 9 Mg/h |
| Commissioning | 2005 |
| Client | GMA, Wangerland, Germany |

Modification automatic sorting plant Troisdorf, Germany

| | |
|----------------|--|
| Location | Troisdorf, North Rhine-Westphalia, Germany |
| Plant | Sorting plant for light weight packaging (LWP) |
| Plant capacity | 8 Mg/h |
| Commissioning | 2002 |
| Client | Remondis, Lünen, Germany |

Modification automatic sorting plant Essen, Germany

| | |
|----------------|--|
| Location | Essen, North Rhine-Westphalia, Germany |
| Plant | Sorting plant for light weight packaging |
| Plant capacity | 7 Mg/h |
| Commissioning | 2001 |
| Client | Remondis, Lünen, Germany |

Automatic sorting plant Cologne-Rodenkirchen, Germany

| | |
|----------------|---|
| Location | Cologne-Rodenkirchen, North Rhine-Westphalia, Germany |
| Plant | Sorting plant for light weight packaging |
| Plant capacity | 4 Mg/h |
| Commissioning | 2001 |
| Client | Remondis, Lünen, Germany |

Sorting plant Backnang, Germany

| | |
|----------------|--|
| Location | Backnang, Baden-Wuerttemberg, Germany |
| Plant | Sorting plant for light weight packaging |
| Plant capacity | 3 Mg/h |
| Commissioning | 1999 |
| Client | Veolia, Filderstadt, Germany |

Sorting plant **Speyerdorf, Germany**

| | |
|----------------|--|
| Location | Speyerdorf, Baden-Wuerttemberg, Germany |
| Plant | Sorting plant for light weight packaging |
| Plant capacity | 3 Mg/h |
| Commissioning | 1999 |
| Client | Veolia, Filderstadt, Germany |

Sorting plant **Achern, Germany**

| | |
|----------------|--|
| Location | Achern, Baden-Wuerttemberg, Germany |
| Plant | Sorting plant for light weight packaging (LWP) |
| Plant capacity | 4 Mg/h |
| Commissioning | 1998 |
| Client | Mittelbadische Entsorgungs- und Recyclingbetriebe, Bietigheim, Germany |



MRF (MATERIAL RECOVERY FACILITIES)

**SORTING PLANTS FOR DRY VALUABLE
SUBSTANCES FROM DOMESTIC WASTE**



Treatment plant for MSW Hamburg, Germany

| | |
|---------------|--|
| Location | Hamburg, Germany |
| Plant | MWS treatment plant for the collection of recyclable materials |
| Capacity | 145,000 Mg/a, 33 Mg/h |
| Commissioning | 2026 |
| Client | Stadtreinigung Hamburg, Germany |

MRF Tuas, Singapore

| | |
|---------------|--|
| Location | Tuas, Singapore |
| Plant | Sorting plant for recyclable materials before incineration |
| Capacity | 77,500 Mg/a |
| Commissioning | 2026 |
| Client | ST Engineering Marine Ltd., Singapore |

Sorting plant for MSW and dry valuable substances Altens East, Scotland

| | |
|---------------|---|
| Location | Aberdeen, Scotland |
| Plant | Sorting plant for MSW and dry valuable substances |
| Capacity | 33,000 Mg/a |
| Commissioning | 2025 |
| Client | Suez Recycling and Recovery UK, Berkshire, United Kingdom |

Sorting plant for MSW and dry valuable substances Santiago de Chile, Chile

| | |
|---------------|---|
| Location | Santiago de Chile, Chile |
| Plant | Sorting plant for MSW and dry valuable substances |
| Capacity | 30,000 Mg/a, 7 Mg/h (two-shift-operation) |
| Commissioning | 2023 |
| Client | Ambipar, Santiago de Chile, Chile |

MRF Porto, Portugal

| | |
|---------------|--|
| Location | Porto, Portugal |
| Plant | Sorting of recyclable materials from packaging waste |
| Capacity | 35,000 Mg/a, 8 Mg/h |
| Commissioning | 2023 |
| Client | Lipor, Baguim do Monte, Spain |

Modification Bockenberg, Germany

| | |
|----------------|---|
| Location | Bockenberg, North Rhine-Westphalia, Germany |
| Plant | Sorting plant for recyclables |
| Plant capacity | 16 Mg/h |
| Commissioning | 2019 |
| Client | AVEA, Leverkusen, Germany |

MRF Southwark, London, United Kingdom

| | |
|----------------|-----------------------------------|
| Location | Southwark, London, United Kingdom |
| Plant | Mechanical waste treatment |
| Plant capacity | 25 Mg/h |
| Commissioning | 2012 |
| Client | Veolia, United Kingdom |

MRF West-Berkshire, United Kingdom

| | |
|----------------|----------------------------|
| Location | Berkshire, United Kingdom |
| Plant | Mechanical waste treatment |
| Plant capacity | 15 Mg/h |
| Commissioning | 2011 |
| Client | Veolia, United Kingdom |

MRF Swanley, United Kingdom

| | |
|----------------|-----------------------------|
| Location | Swanley, United Kingdom |
| Plant | Mechanical waste treatment |
| Plant capacity | 15 Mg/h |
| Commissioning | 2011 |
| Client | Ideal Waste, United Kingdom |

MRF Mansfield, United Kingdom

| | |
|----------------|----------------------------|
| Location | Mansfield, United Kingdom |
| Plant | Mechanical waste treatment |
| Plant capacity | 25 Mg/h |
| Commissioning | 2009 |
| Client | Veolia, United Kingdom |

MRF Newcastle, United Kingdom

| | |
|----------------|----------------------------|
| Location | Newcastle, United Kingdom |
| Plant | Mechanical waste treatment |
| Plant capacity | 15 Mg/h |
| Commissioning | 2009 |
| Client | Sita UK, United Kingdom |

MRF Rainham, United Kingdom

| | |
|----------------|--------------------------------|
| Location | Rainham, United Kingdom |
| Plant | upgrade, glass treatment added |
| Plant capacity | 22 Mg/h |
| Commissioning | 2009 |
| Client | Veolia, United Kingdom |

MRF Brighton, United Kingdom

| | |
|----------------|----------------------------|
| Location | Brighton, United Kingdom |
| Plant | Mechanical waste treatment |
| Plant capacity | 15 Mg/h |
| Commissioning | 2008 |
| Client | Veolia, United Kingdom |

MRF Caythorpe, United Kingdom

| | |
|----------------|----------------------------|
| Location | Caythorpe, United Kingdom |
| Plant | Mechanical waste treatment |
| Plant capacity | 15 Mg/h |
| Commissioning | 2008 |
| Client | MID UK, United Kingdom |

MRF Reading, United Kingdom

| | |
|----------------|----------------------------|
| Location | Reading, United Kingdom |
| Plant | Mechanical waste treatment |
| Plant capacity | 15 Mg/h |
| Commissioning | 2008 |
| Client | AECOM/RE3, United Kingdom |

Autoclave Rotherham, United Kingdom

| | |
|----------------|----------------------------|
| Location | Rotherham, United Kingdom |
| Plant | Mechanical waste treatment |
| Plant capacity | 80,000 Mg/a |
| Commissioning | 2008 |
| Client | Sterecycle, United Kingdom |

MRF Alton, United Kingdom

| | |
|----------------|----------------------------|
| Location | Alton, United Kingdom |
| Plant | Mechanical waste treatment |
| Plant capacity | 24 Mg/h |
| Commissioning | 2004 |
| Client | Veolia, United Kingdom |

MRF Greenwich, United Kingdom

| | |
|----------------|----------------------------|
| Location | Greenwich, United Kingdom |
| Plant | Mechanical waste treatment |
| Plant capacity | 50,000 Mg/a |
| Commissioning | 2004 |
| Client | Veolia, United Kingdom |

MRF Grundon, United Kingdom

| | |
|----------------|---|
| Location | Grundon, United Kingdom |
| Plant | Mechanical waste treatment |
| Plant capacity | 14 Mg/h |
| Commissioning | 2003 |
| Client | Grundon Waste Management, United Kingdom |

MRF Rainham, United Kingdom

| | |
|----------------|--------------------------------------|
| Location | Rainham, United Kingdom |
| Plant | Mechanical waste treatment |
| Plant capacity | 50,000 Mg/a |
| Commissioning | 2001 |
| Client | Veolia, Brentwood, United Kingdom |



REFUSE DERIVED FUEL (RDF)

TREATMENT PLANTS FOR REFUSE DERIVED FUEL (SRF/RDF)



Commercial waste treatment plant Hannover, Germany

| | |
|----------------|--|
| Location | Hannover, Germany |
| Plant | Commercial treatment plant for the production of SRF |
| Plant capacity | 24 Mg/h |
| Commissioning | 2021 |
| Client | Noris Entsorgung, Germany |

Sorting plant for commercial waste & construction and demolition waste Hannover, Germany

| | |
|----------------|--|
| Location | Hannover, Germany |
| Plant | Sorting plant for industrial waste and construction and demolition waste producing RDF |
| Plant capacity | 30 Mg/h |
| Commissioning | 2018 |
| Client | Tönsmeier Entsorgung, Germany |

Commercial waste treatment plant Rugby, United Kingdom

| | |
|----------------|--|
| Location | Rugby, United Kingdom |
| Plant | Treatment plant for commercial and municipal solid waste for the production of SRF |
| Plant capacity | 55 Mg/h commercial and domestic waste |
| Commissioning | 2015 |
| Client | Sita UK, United Kingdom |

Commercial waste treatment plant Birmingham, United Kingdom

| | |
|----------------|--|
| Location | Birmingham, United Kingdom |
| Plant | Commercial treatment plant for the production of SRF |
| Plant capacity | 24 Mg/h industrial waste |
| Commissioning | 2013 |
| Client | Sita UK, United Kingdom |

Sorting plant for commercial waste & construction and demolition waste **Helsinki, Finland**

| | |
|----------------|--|
| Location | Helsinki, Finland |
| Plant | Sorting plant for industrial waste and construction and demolition waste producing RDF |
| Plant capacity | 25 Mg/h industrial waste 30 Mg/h construction demolition waste |
| Commissioning | 2010 |
| Client | Lassila Tikanoja, Finland |

Commercial waste treatment plant **Northampton, United Kingdom**

| | |
|----------------|-----------------------------|
| Location | Northampton, United Kingdom |
| Plant | Production of RDF/SRF |
| Plant capacity | 25 Mg/h |
| Commissioning | 2009 |
| Client | HW Martin, United Kingdom |

Treatment plant for RDF **Meppen, Germany**

| | |
|----------------|---|
| Location | Meppen, Lower Saxony, Germany |
| Plant | Production of RDF/SRF |
| Plant capacity | 30 Mg/h |
| Commissioning | 2006 |
| Client | Augustin Städtereinigung, Meppen, Germany |

Treatment plant for RDF **Flörsheim, Germany**

| | |
|----------------|---------------------------|
| Location | Flörsheim, Hesse, Germany |
| Plant | Production of RDF/SRF |
| Plant capacity | 13 Mg/h |
| Commissioning | 2006 |
| Client | Remondis, Lünen, Germany |

Treatment plant for RDF **Cologne, Germany**

| | |
|----------------|--|
| Location | Cologne, North Rhine-Westphalia, Germany |
| Plant | Production of RDF/SRF |
| Plant capacity | 20 Mg/h |
| Commissioning | 2006 |
| Client | GVG, Cologne, Germany |

Treatment plant for RDF **Wels, Austria**

| | |
|----------------|--------------------------|
| Location | Wels, Austria |
| Plant | Production of RDF/SRF |
| Plant capacity | 18 Mg/h |
| Commissioning | 2006 |
| Client | Energie AG Wels, Austria |

Treatment plant for RDF **Ihlenberg, Germany**

| | |
|----------------|--|
| Location | Ihlenberg, Mecklenburg-Western Pomerania, Germany |
| Plant | Production of RDF/SRF |
| Plant capacity | 25 Mg/h |
| Commissioning | 2006 |
| Client | RABA Ihlbenberg, Selmsdorf, Germany |

Treatment plant for RDF **Halle-Lochau, Germany**

| | |
|----------------|--------------------------------|
| Location | Lochau, Lower Saxony, Germany |
| Plant | Production of RDF/SRF |
| Plant capacity | 20 Mg/h |
| Commissioning | 2006 |
| Client | Fehr Umwelt, Döllnitz, Germany |

Treatment plant for RDF **Ennigerloh, Germany**

| | |
|----------------|---|
| Location | Ennigerloh, North Rhine-Westphalia, Germany |
| Plant | Production of RDF/SRF |
| Plant capacity | 24 Mg/h |
| Commissioning | 2006 |
| Client | EKOWEST, Ennigerloh, Germany |

Treatment plant for RDF **Meschede, Germany**

| | |
|----------------|---|
| Location | Meschede, North Rhine-Westphalia, Germany |
| Plant | Production of RDF/SRF |
| Plant capacity | 30 Mg/h |
| Commissioning | 2005 |
| Client | Remondis, Lünen, Germany |

Treatment plant for RDF **Neuss, Germany**

| | |
|----------------|--|
| Location | Neuss, North Rhine-Westphalia, Germany |
| Plant | Production of RDF/SRF |
| Plant capacity | 30 Mg/h |
| Commissioning | 2005 |
| Client | EGN, Grevenbroich, Germany |

Treatment plant for RDF **Bochum, Germany**

| | |
|----------------|---|
| Location | Bochum, North Rhine-Westphalia, Germany |
| Plant | Production of RDF/SRF |
| Plant capacity | 30 Mg/h |
| Commissioning | 2005 |
| Client | Weber, Bochum, Germany |

Treatment plant for RDF **Kerpen, Germany**

| | |
|----------------|---|
| Location | Kerpen, North Rhine-Westphalia, Germany |
| Plant | Production of RDF/SRF |
| Plant capacity | 20 Mg/h |
| Commissioning | 2005 |
| Client | Schönmackers, Kerpen, Germany |

Treatment plant for RDF **Asdonkshof, Germany**

| | |
|----------------|--|
| Location | Kamp Lintfort, North Rhine-Westphalia, Germany |
| Plant | Production of RDF/SRF |
| Plant capacity | 20 Mg/h |
| Commissioning | 2005 |
| Client | KWA, Kreis Wesel, Kamp Lintfort, Germany |

Treatment plant for RDF **Wiefels, Germany**

| | |
|----------------|--------------------------------|
| Location | Wiefels, Lower Saxony, Germany |
| Plant | Production of RDF/SRF |
| Plant capacity | 20 Mg/h |
| Commissioning | 2004 |
| Client | GMA, Wangerland, Germany |

Treatment plant for RDF **Winschoten, The Netherlands**

| | |
|----------------|--|
| Location | Winschoten, The Netherlands |
| Plant | Production of RDF/SRF |
| Plant capacity | 15 Mg/h |
| Commissioning | 2002 |
| Client | AIBra Winschoten bv, Winschoten, The Netherlands |

Treatment plant for RDF **Delitzsch, Germany**

| | |
|-------------------|--|
| Location | Delitzsch, Saxony, Germany |
| Plant | Production of RDF/SRF |
| Plant capacity | 50,000 Mg/a |
| Commissioning | 2000 |
| Client | Kreiswerke Delitzsch, Delitzsch, Germany |
| 2002 fire damage: | New installation and plant extension |
| Plant capacity | 60,000 Mg/a |
| Commissioning | 2002 |

Treatment plant for RDF Akea, Germany

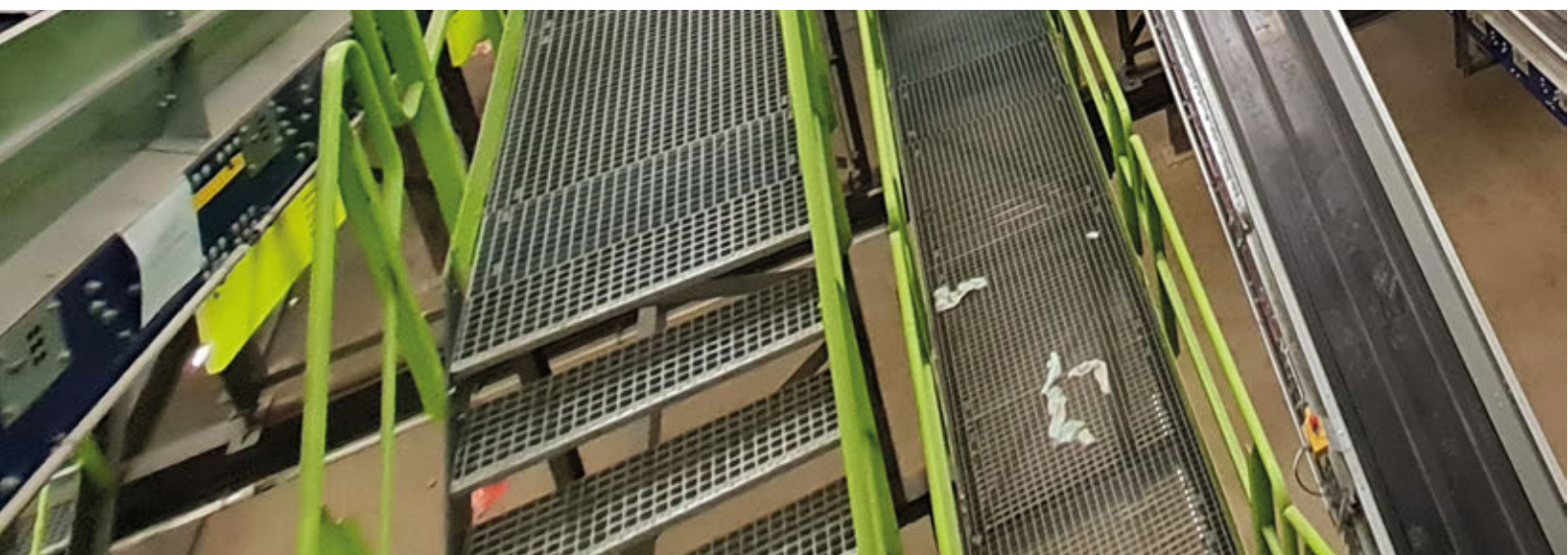
| | |
|----------------|--|
| Location | Erftstadt, North Rhine-Westphalia, Germany |
| Plant | Production of RDF/SRF |
| Plant capacity | 45,000 Mg/a (one-shift-operation) |
| Commissioning | 1998 |
| Client | Remondis, Lünen, Germany |

Production of Pellets as RDF Krefeld, Germany

| | |
|----------------|--|
| Location | Krefeld, North Rhine-Westphalia, Germany |
| Plant | Production of pellets as RDF |
| Plant capacity | 13,000 Mg/a (one-shift-operation) |
| Commissioning | 1995 |
| Client | Remondis, Krefeld, Germany |



**COMMERCIAL AND INDUSTRIAL WASTE (C+I),
MIXED BUILDING DEBRIS, BULKY WASTE
TREATMENT PLANTS FOR COMMERCIAL AND INDUSTRIAL
WASTE, MIXED BUILDING DEBRIS, BULKY WASTE**



Sorting plant for commercial and industrial waste, **Gent, Belgium**

| | |
|----------------|--|
| Location | Gent, Belgium |
| Plant | Commercial and industrial waste for the recovery of recyclable materials |
| Plant capacity | 65.000 Mg/a |
| Commissioning | 2021 |
| Client | Suez R&R BE Services, Belgium |

Sorting plant **Troisdorf, Germany**

| | |
|----------------|--|
| Location | Troisdorf, North Rhine-Westphalia, Germany |
| Plant | Sorting plant for industrial waste refuse |
| Plant capacity | 20 Mg/h |
| Commissioning | 2019 |
| Client | Remondis, Germany |

Sorting plant **Eichenzell, Germany**

| | |
|----------------|--|
| Location | Eichenzell, Hesse, Germany |
| Plant | Sorting plant for industrial waste refuse |
| Plant capacity | 22 Mg/h |
| Commissioning | 2019 |
| Client | Veolia Umweltservice West, Eichenzell, Germany |

Sorting plant **Hannover, Germany**

| | |
|----------------|---|
| Location | Hannover, Lower Saxony, Germany |
| Plant | Sorting plant for industrial waste refuse |
| Plant capacity | 80,000 Mg/a |
| Commissioning | 2018 |
| Client | Tönsmeier Entsorgung, Germany |

Sorting plant **Ahrental, Austria**

| | |
|----------------|--|
| Location | Ahrental, Austria |
| Plant | Sorting plant for industrial, domestic and bulky waste |
| Plant capacity | 40 Mg/h |
| Commissioning | 2010 |
| Client | Arge Ahrental Fröschl Alpine, Austria |

Sorting plant Helsinki, Finland

| | |
|----------------|---|
| Location | Helsinki, Finland |
| Plant | Sorting plant for industrial waste refuse and construction demolition waste |
| Plant capacity | 25 Mg/h industrial waste 30 Mg/h construction demolition waste |
| Commissioning | 2010 |
| Client | Lassila Tikanoja, Finland |

Commercial waste treatment plant Northampton, United Kingdom

| | |
|----------------|------------------------------|
| Location | Northampton, United Kingdom |
| Plant | Production of RDF/SRF |
| Plant capacity | 25 Mg/h |
| Commissioning | 2009 |
| Client | HW Martin Ud, United Kingdom |

Sorting plant Ennigerloh, Germany

| | |
|----------------|---|
| Location | Ennigerloh, Germany, Germany |
| Plant | Sorting plant for industrial waste, and household waste |
| Plant capacity | 26 Mg/h household waste 26 Mg/h industrial waste |
| Commissioning | 2008 |
| Client | AWG, Warendorf, Germany |

Sorting plant Luton, United Kingdom

| | |
|----------------|---|
| Location | Luton, United Kingdom |
| Plant | Sorting plant for industrial waste refuse |
| Plant capacity | 30 Mg/h |
| Commissioning | 2008 |
| Client | Cawley, United Kingdom |

Sorting plant **Bitburg, Germany**

| | |
|----------------|---|
| Location | Bitburg, Rhineland Palatinate, Germany |
| Plant | Sorting plant for construction waste, industrial waste and bulky refuse |
| Plant capacity | 15 Mg/h |
| Commissioning | 2006 |
| Client | BRG Umweltpark Bitburg, Germany |

Sorting plant **GVG, Germany**

| | |
|----------------|--|
| Location | Cologne, North Rhine-Westphalia, Germany |
| Plant | Sorting plant for industrial waste |
| Plant capacity | 40 Mg/h |
| Commissioning | 2006 |
| Client | GVG Cologne, Germany |

BMA Gernsheim, Germany

| | |
|----------------|---|
| Location | Gernsheim, Bavaria, Germany |
| Plant | Sorting plant for construction waste, industrial waste and bulky refuse |
| Plant capacity | 90,000 Mg/a |
| Commissioning | 1996 |
| Client | Waibel KG, Gernsheim, Germany |

Sorting plant **BAV, Germany**

| | |
|----------------|---|
| Location | Cologne Rath-Heumar, North Rhine-Westphalia, Germany |
| Plant | Sorting plant for construction waste, industrial waste and bulky refuse |
| Plant capacity | 45 Mg/h |
| Commissioning | 1994 |
| Client | Remondis, Viersen, Germany |

Construction waste treatment plant Neandertal, Germany

| | |
|----------------|---|
| Location | Mettmann, North Rhine-Westphalia, Germany |
| Plant | Sorting plant for construction waste |
| Plant capacity | 45 Mg/h |
| Commissioning | 1994 |
| Client | R+R Rohstoffrückgewinnung und Recycling, Mettmann, Germany |



WASTE PAPER TREATMENT

SORTING PLANTS FOR WASTE PAPER AND CARDBOARD



Paper sorting plant **Bern, Switzerland**

| | |
|----------------|--------------------------|
| Location | Bern, Switzerland |
| Plant | Sorting plant for paper |
| Plant capacity | 14 Mg/h |
| Commissioning | 2017 |
| Client | Alpabern AG, Switzerland |

Paper sorting plant **Dachau, Germany**

| | |
|----------------|--------------------------|
| Location | Dachau, Bavaria, Germany |
| Plant | Sorting plant for paper |
| Plant capacity | 24 Mg/h two lines |
| Commissioning | 2008 |
| Client | ASO, Dachau, Germany |

Paper sorting plant **Zorneding, Germany**

| | |
|----------------|---|
| Location | Zorneding, Bavaria, Germany |
| Plant | Sorting plant for paper from households |
| Plant capacity | 12 Mg/h |
| Commissioning | 2007 |
| Client | Ammer, Zorneding, Germany |

Paper sorting plant **Schwedt, Germany**

| | |
|----------------|---|
| Location | Schwedt, Brandenburg, Germany |
| Plant | Sorting plant for paper from households |
| Plant capacity | 20 Mg/h |
| Commissioning | 2004 |
| Client | MAD, Munich, Germany |

Automatic paper sorting plant **Sheffield, United Kingdom**

| | |
|----------------|-------------------------------|
| Location | Sheffield, United Kingdom |
| Plant | Automatic paper sorting plant |
| Plant capacity | 14 Mg/h |
| Commissioning | 2003 |
| Client | Onyx, United Kingdom |

Automatic paper sorting plant **Cologne-Merkenich, Germany**

| | |
|----------------|--|
| Location | Cologne-Merkenich, North Rhine-Westphalia, Germany |
| Plant | Automatic paper sorting plant |
| Plant capacity | 14.5 Mg/h |
| Commissioning | 2001 |
| Client | Remondis, Lünen, Germany |

Sorting plant **Nützen, Germany**

| | |
|----------------|--|
| Location | Nützen, Lower Saxony, Germany |
| Plant | Sorting plant for paper, cardboard and paper board |
| Plant capacity | 12 Mg/h |
| Commissioning | 1999 |
| Client | Brockmann, Nützen, Germany |

Sorting plant **Hamburg, Germany**

| | |
|----------------|--|
| Location | Hamburg, Germany |
| Plant | Sorting plant for paper, cardboard and paper board |
| Plant capacity | 13 Mg/h |
| Commissioning | 1999 |
| Client | Veolia, Hamburg, Germany |



DOMESTIC WASTE, SRF/RDF BEFORE THERMAL TREATMENT

PRE-SORTING FACILITIES BEFORE THERMAL TREATMENT



Treatment before Gasification, **Hull, United Kingdom**

| | |
|----------------|--|
| Location | Hull, United Kingdom |
| Plant | Treatment before Gasification, Mechanical treatment of RDF, sort out of impurities |
| Plant capacity | 278,000 Mg/a |
| Commissioning | 2018 |
| Client | M+W Group, United Kingdom |

Pre-treatment plant **Solucom, Luxembourg**

| | |
|----------------|--|
| Location | Leudeling, Luxembourg |
| Plant | Mechanical pre-treatment of domestic waste before thermal treatment |
| Plant capacity | 20,000 Mg/a |
| Commissioning | 2001 |
| Client | Solucom, Luxembourg |

Pre-treatment plant **Cologne-Niehl, Germany**

| | |
|--|--|
| Location | Cologne-Niehl, North Rhine-Westphalia, Germany |
| Plant | Mechanical pre-treatment of domestic waste before thermal treatment |
| Plant capacity | 660,000 Mg/a |
| Commissioning, modification and extension | 1996 until 2000 |
| Client | AVG Abfallentsorgungs- und Verwertungs- Gesellschaft Köln, Cologne, Germany |

Pre-treatment plant **Leverkusen, Germany**

| | |
|----------------|--|
| Location | Leverkusen, North Rhine-Westphalia, Germany |
| Plant | Mechanical pre-treatment of domestic waste before thermal treatment |
| Plant capacity | 38,500 Mg/a |
| Commissioning | 1994 |
| Client | AWL Abfallwirtschaftsgesellschaft, Leverkusen, Germany |



SLAG AND BOTTOM ASH FROM INCINERATION BOTTOM ASH TREATMENT



Slag treatment plant **Gelsenkirchen, Germany**

| | |
|----------------|---|
| Location | Zentraldeponie Emscherbruch, Germany |
| Plant | Bottom ash treatment |
| Plant capacity | 150 Mg/h |
| Modification | 2021 (extension of the processing line) |
| Commissioning | 2011 |
| Client | AGR, Germany |

Slag treatment plant **Poznan, Poland**

| | |
|----------------|----------------------------------|
| Location | Poznan, Poland |
| Plant | Bottom ash treatment |
| Plant capacity | 40 Mg/h |
| Commissioning | 2016 |
| Client | Hitachi Zosen Inova, Switzerland |

Slag treatment plant **Mannheim, Germany**

| | |
|----------------|---------------------------------------|
| Location | Mannheim, Germany |
| Plant | Mobile slag treatment |
| Plant capacity | 0-8 mm = 55 Mg/h 8-75 mm = 40 Mg/h |
| Commissioning | 2009 |
| Client | Remex, Germany |

Slag treatment plant **Halle, Germany**

| | |
|----------------|---|
| Location | Halle, Saxony Anhalt, Germany |
| Plant | Slag treatment with extraction of reusable materials and preparation of slag as construction material |
| Plant capacity | 120 Mg/h |
| Commissioning | 2005 |
| Client | Baumann & Burmeister (Strabag), Germany |

Slag treatment plant Illingen, Germany

| | |
|----------------|---|
| Location | Illingen, Saarland, Germany |
| Plant | Slag treatment with extraction of reusable materials and preparation of slag as construction material |
| Plant capacity | 180,000 Mg/a |
| Commissioning | 1999 |
| Client | Sotec, Saarbrücken, Germany |

Slag treatment plant Weisweiler, Germany

| | |
|----------------|---|
| Location | Weisweiler, North Rhine-Westphalia, Germany |
| Plant | Slag treatment with extraction of reusable materials and preparation of slag as construction material |
| Plant capacity | 100,000 Mg/a |
| Commissioning | 1999 |
| Client | TRAWA, Aachen, Germany |

Slag treatment plant Cologne-Niehl, Germany

| | |
|----------------|---|
| Location | Cologne-Niehl, North Rhine-Westphalia, Germany |
| Plant | Slag treatment with extraction of reusable materials and preparation of slag as construction material |
| Plant capacity | 130,000 Mg/a |
| Commissioning | 1998 |
| Client | AVG Abfallentsorgungs- und Verwertungsgesellschaft Köln, Cologne, Germany |

Slag treatment plant MVR Rugenberger Damm, Hamburg, Germany

| | |
|----------------|---|
| Location | Hamburg, Germany |
| Plant | Slag treatment with extraction of reusable materials and preparation of slag as construction material |
| Plant capacity | 50 Mg/h |
| Commissioning | 1998 |
| Client | MVR Müllverwertung Rugenberger Damm, Hamburg, Germany |



COMPOSTING PLANTS



Composting plant **Bützberg, Germany**

| | |
|----------------|---------------------------------|
| Location | Bützberg, Germany |
| Plant | Windrow system Wendelin |
| Plant capacity | 45,000 Mg/a |
| Commissioning | 2027 |
| Client | Stadtreinigung Hamburg, Germany |

Composting plant **Oberschmon, Germany**

| | |
|----------------|---|
| Location | Oberschmon, Germany |
| Plant | Composting of sewage sludge, System BIODEGMA |
| Plant capacity | 30,000 Mg/a |
| Commissioning | 2022 |
| Client | Wiese Umwelt Service, Germany |

Composting plant **Obersontheim, Germany**

| | |
|----------------|-----------------------------------|
| Location | Obersontheim, Germany |
| Plant | Composting Plant, System BIODEGMA |
| Plant capacity | 25,000 Mg/a |
| Commissioning | 2020 |
| Client | KGH Umweltservice, Germany |

Waste management **Hannover, Germany**

| | |
|----------------|--|
| Location | Hannover, Lower Saxony, Germany |
| Plant | Second windrow system Wendelin plus charging bridge |
| Plant capacity | 40,000 Mg/a |
| Commissioning | 2020 |
| Client | AHA Hannover, Germany |

Composting plant **Działdowo, Poland**

| | |
|----------------|--|
| Location | Działdowo, Poland |
| Plant | Stabilisation of MSW fraction < 80mm, System BIODEGMA |
| Plant capacity | 15,000 Mg/a |
| Commissioning | 2019 |
| Client | Ekologiczny Związek Gmin "Działdowszczyzna", Poland |

Composting plant **Rekowo, Poland**

| | |
|----------------|--|
| Location | Rekowo, Poland |
| Plant | Stabilisation of MSW fraction < 80mm, System BIODEGMA |
| Plant capacity | 8,000 Mg/a |
| Commissioning | 2019 |
| Client | ZZO Sierzno, Rekowo, Poland |

Composting plant **Kwidzyn, Poland**

| | |
|----------------|--|
| Location | Kwidzyn, Poland |
| Plant | Stabilisation of MSW fraction < 80mm, System BIODEGMA |
| Plant capacity | 12,000 Mg/a |
| Commissioning | 2019 |
| Client | Zakład Utylizacji Odpadów, Poland |

Composting plant **Goch, Germany**

| | |
|----------------|--|
| Location | Goch, North Rhine-Westphalia, Germany |
| Plant | Bio waste and green waste composting, System BioFIX |
| Plant capacity | 70,000 Mg/a |
| Upgrade | 2019 |
| Commissioning | 1998 |
| Client | Schönmackers Umweltdienste, Goch, Germany |

Composting plant **Osnabrück, Germany**

| | |
|-------------------|---|
| Location Plant | Osnabrück, Lower Saxony, Germany Composting plant for the treatment of Organic and green waste, tunnel composting system |
| Plant capacity | 122,000 Mg/a |
| Commissioning | 2018 |
| Client | Kompostierungsgesellschaft Region Osnabrück, Germany |

Composting plant **Buchen, Germany**

| | |
|-------------------|--|
| Location Plant | Buchen, Germany Composting Plant for Green Waste, System BIODEGMA |
| Plant capacity | 5,000 Mg/a |
| Commissioning | 2017 |
| Client | AWN Abfallwirtschaftsgesellschaft des Neckar-Odenwald-Kreises, Germany |

Composting plant **Wiesbaden, Germany**

| | |
|-------------------|---|
| Location Plant | Wiesbaden, Germany Composting Plant for Green Waste, System BIODEGMA |
| Plant capacity | 13,000 Mg/a |
| Commissioning | 2017 |
| Client | HK & G Service, Germany |

Composting plant **Dar es Salaam, Tanzania**

| | |
|-------------------|--|
| Location Plant | Dar es Salaam, Tanzania Source separated organics - composting plant, System BIODEGMA |
| Plant capacity | 55,000 Mg/a |
| Commissioning | 2016 |
| Client | Dr. Kölsch Geo- und Umwelttechnik, Germany |

Waste management **Hannover, Germany**

| | |
|----------------|---------------------------------|
| Location | Hannover, Lower Saxony, Germany |
| Plant | Windrow system Wendelin |
| Plant capacity | 40,000 Mg/a |
| Commissioning | 2016 |
| Client | AHA Hannover, Germany |

Composting plant **Varaždin, Croatia**

| | |
|----------------|---|
| Location | Varaždin, Croatia |
| Plant | Composting of sewage sludge, System BIODEGMA |
| Plant capacity | 5,000 Mg/a |
| Commissioning | 2015 |
| Client | HIS D.O.O., Croatia |

Composting plant **Słupsk, Poland**

| | |
|----------------|--|
| Location | Słupsk, Poland |
| Plant | Stabilisation of MSW fraction < 80mm, System BIODEGMA |
| Plant capacity | 13,000 Mg/a |
| Commissioning | 2015 |
| Client | PGK Słupsk-Baza, Poland |

Composting plant **Kołobrzeg, Poland**

| | |
|----------------|--|
| Location | Kołobrzeg, Poland |
| Plant | Stabilisation of MSW fraction < 80mm, System BIODEGMA |
| Plant capacity | 16,000 Mg/a |
| Commissioning | 2015 |
| Client | MZZ Kołobrzeg, Poland |

Composting plant **Wola Pawłowska, Poland**

| | |
|----------------|--|
| Location | Wola Pawłowska, Poland |
| Plant | Stabilisation of MSW fraction < 80mm, System BIODEGMA |
| Plant capacity | 20,500 Mg/a |
| Commissioning | 2015 |
| Client | PUK, Poland |

Composting plant **Sosnowiec, Poland**

| | |
|----------------|--|
| Location | Sosnowiec, Poland |
| Plant | Stabilisation of MSW fraction < 80mm, System BIODEGMA |
| Plant capacity | 26,000 Mg/a |
| Commissioning | 2015 |
| Client | MZSO Sosnowiec, Poland |

Composting plant **Bolesław, Poland**

| | |
|----------------|--|
| Location | Bolesław, Poland |
| Plant | Stabilisation of MSW fraction < 80mm, System BIODEGMA |
| Plant capacity | 21,000 Mg/a |
| Commissioning | 2015 |
| Client | ZGK Bolesław, Poland |

Composting plant **Rybnik, Poland**

| | |
|----------------|--|
| Location | Rybnik, Poland |
| Plant | Stabilisation of MSW fraction < 80mm, System BIODEGMA |
| Plant capacity | 20,000 Mg/a |
| Commissioning | 2015 |
| Client | Sego, Poland |

Waste management Linkenbach, Germany

| | |
|----------------|---------------------------------|
| Location | Neuwied, Kreis Neuwied, Germany |
| Plant | Tunnel composting |
| Plant capacity | 39,000 Mg/a |
| Commissioning | 2014 |
| Client | Kreis Neuwied, Germany |

Waste management Düsseldorf, Germany

| | |
|----------------|--|
| Location | Düsseldorf, KDM, Germany |
| Plant | Presorting treatment before composting |
| Plant capacity | 40 Mg/h |
| Commissioning | 2013 |
| Client | KDM, Düsseldorf, Germany |

Composting plant Toscana, Italy

| | |
|----------------|---|
| Location | Terranova Toscana, Italy |
| Plant | Bio waste and green waste composting System BioFIX |
| Plant capacity | 44,300 Mg/a |
| Commissioning | 2007 |
| Client | Unieco, Italy |

Bio waste composting in combination with mechanical-biological waste treatment, Piedmont, Italy

| | |
|----------------|--|
| Location | Piedmont, Italy |
| Plant | Mechanical and biological waste treatment System BioFIX |
| Plant capacity | 18,000 Mg/a |
| Commissioning | 2004 |
| Client | Unieco, Italy |

Composting plant **Schwegermoor, Germany**

| | |
|----------------|--|
| Location | Schwegermoor, Lower Saxony, Germany |
| Plant | Bio waste and green waste composting optimisation: Tunneled system procedure |
| Plant capacity | 50,000 Mg/a |
| Commissioning | 2003 |
| Client | K.R.O., Schwegermoor, Germany |

Composting plant **Stavanger, Norway**

| | |
|----------------|--|
| Location | Stavanger, Norway |
| Plant | Bio waste and green waste composting System BioFIX |
| Plant capacity | 28,000 Mg/a |
| Commissioning | 2000 |
| Client | IVAR Interkommunalt Vann, Avlops-og Renovasjonsverk, Forus, Norway |

Composting plant **Contarina, Italy**

| | |
|----------------|---|
| Location | Spresiano (TV), Italy |
| Plant | Bio waste and green waste composting as well as biological waste treatment System Wendelin and Trimalin |
| Plant capacity | 52,200 Mg/a |
| Commissioning | 2000 |
| Client | Lurgi Entsorgung, Ratingen, Germany |

Composting plant **Viersen, Germany**

| | |
|----------------|--|
| Location | Viersen, North Rhine-Westphalia, Germany |
| Plant | Bio waste and green waste composting System BioFIX |
| Plant capacity | 50,000 Mg/a |
| Commissioning | 1998 |
| Client | Reterra, Viersen, Germany |

Composting plant **Neuss-Korschenbroich, Germany**

| | |
|----------------|---|
| Location | Neuss-Korschenbroich, North Rhine-Westphalia, Germany |
| Plant | Bio waste and green waste composting System Kompoflex |
| Plant capacity | 40,000 Mg/a |
| Commissioning | 1998 |
| Client | Reterra, Viersen, Germany |

Composting plant **Düsseldorf-Mettmann, Germany**

| | |
|----------------|--|
| Location | Ratingen, North Rhine-Westphalia, Germany |
| Plant | Bio waste and green waste composting System BioFIX |
| Plant capacity | 35,000 Mg/a |
| Commissioning | 1997 |
| Client | KDM – Kompostierungs- und Vermarktungsges. für Kreis Mettmann, Düsseldorf, Germany |

Composting plant **Cologne-Niehl, Germany**

| | |
|----------------|---|
| Location | Cologne-Niehl, North Rhine-Westphalia, Germany |
| Plant | Bio waste and green waste composting System Kompoflex |
| Plant capacity | 42,000 Mg/a |
| Commissioning | 1997 |
| Client | AVG Abfallentsorgungs- und Verwertungsgesellschaft Köln, Cologne, Germany |

Composting plant **VZEK, Germany**

| | |
|----------------|---|
| Location | Erfstadt, North Rhine-Westphalia, Germany |
| Plant | Bio waste and green waste composting System Kompoflex |
| Plant capacity | 54,000 Mg/a |
| Commissioning | 1997 |
| Client | Remondis, Erfstadt, Germany |

Composting plant **Bischofsheim, Germany**

| | |
|----------------|---|
| Location | Bischofsheim, Hesse, Germany |
| Plant | Bio waste and green waste composting, treatment |
| Plant capacity | 30,000 Mg/a |
| Commissioning | 1995 |
| Client | Riedwerke, Groß Gerau, Germany |

Composting plant **Lochau, Germany**

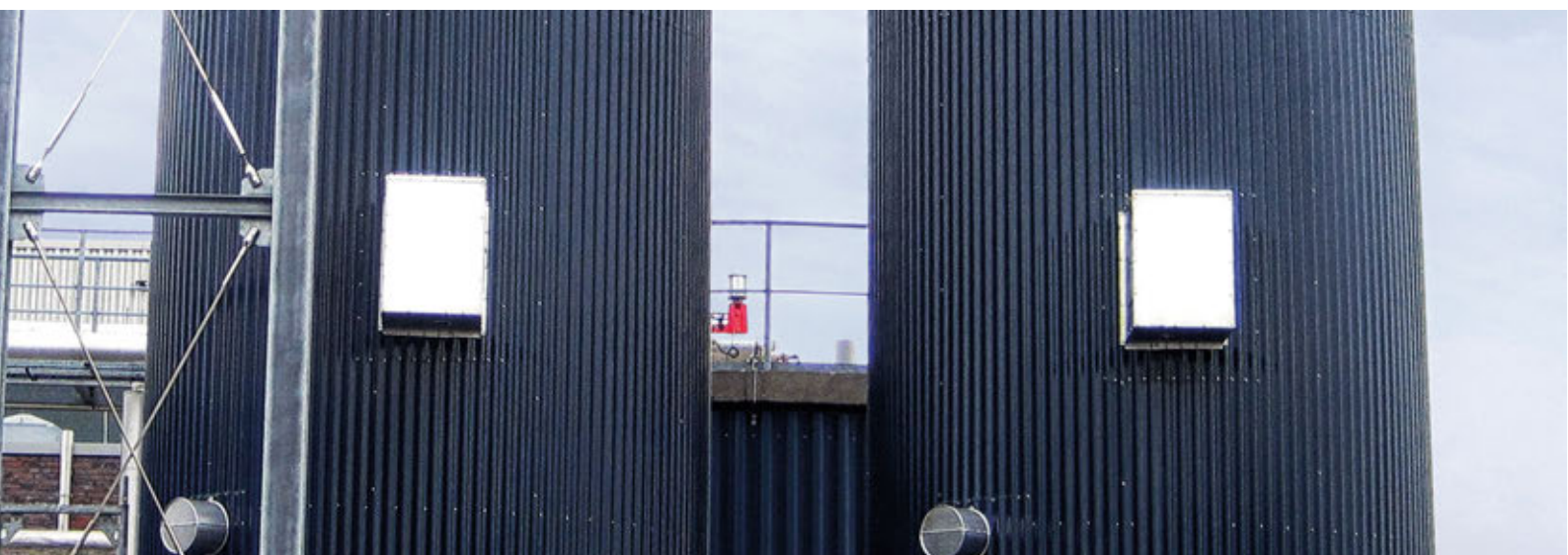
| | |
|----------------|---|
| Location | Lochau, Saxony-Anhalt, Germany |
| Plant | Bio waste and green waste composting System BioFIX |
| Plant capacity | 6,500 Mg/a |
| Commissioning | 1994 |
| Client | Mitteldeutsche Umwelt- und Entsorgung, Braunsbedra, Germany |

Composting plant **Gut Müttinghoven, Germany**

| | |
|----------------|--|
| Location | Swisttal-Morenhoven, North Rhine-Westphalia, Germany |
| Plant | Bio waste and green waste composting System BioFIX |
| Plant capacity | 12,000 Mg/a |
| Commissioning | 1993 |
| Client | KDM Reterra, Erftstadt, Germany |



FERMENTATION PLANTS



Fermentation plant **Erbenschwang, Germany**

| | |
|----------------|---------------------------------------|
| Location | Ingenried, Bavaria, Germany |
| Plant | Fermentation plant for residual waste |
| Plant capacity | 60,000 Mg/a |
| Commissioning | 2019 |
| Client | Eva, Ingenried, Germany |

Fermentation plant **Gescher, Germany**

| | |
|----------------|---|
| Location | Gescher North Rhine-Westphalia, Germany |
| Plant | Fermentation plant |
| Plant capacity | 60,000 Mg/a |
| Commissioning | 2014 |
| Client | EGW, Gescher, Germany |

Fermentation plant **Mülheim a.d.R., Germany**

| | |
|----------------|---|
| Location | Mülheim a.d.R., North Rhine-Westphalia, Germany |
| Plant | Fermentation plant for bio waste and food waste |
| Plant capacity | 22,000 Mg/a |
| Commissioning | 2004 |
| Client | MEG Mülheimer Entsorgungsgesellschaft, Mülheim an der Ruhr, Germany |



WOOD TREATMENT PLANTS



Wood treatment plant **Vossenack, Germany**

| | |
|----------------|--|
| Location | Düren, North Rhine-Westphalia, Germany |
| Plant | Treatment plant for the production of wood chips and pellets |
| Plant capacity | 65,000 Mg/a |
| Commissioning | 2007 |
| Client | STAWAG, Aachen, Germany |



CONVEYING EQUIPMENT



Different conveying equipment **Amman, Jordan**

| | |
|----------------|-------------------------------------|
| Location | Amman, Jordan |
| Plant | Different conveying equipment |
| Plant capacity | 2017 |
| Client | Adelmann Umwelt, Karlstadt, Germany |

Plant for data destruction **Cologne, Germany**

| | |
|----------------|---|
| Location | Cologne, Germany |
| Plant | Conveying equipment and measuring units |
| Plant capacity | 10 Mg/h |
| Commissioning | 2007 |
| Client | Bruckmann, Cologne, Germany |

Plant for RDF in **Austria**

| | |
|----------------|--|
| Location | Sankt Pantaleon, Austria |
| Plant | Conveying equipment and air separation |
| Plant capacity | 8 Mg/h |
| Commissioning | 2006 |
| Client | Neuhauser, Austria |

Plant for pre-treatment and crushing of bulky waste, **Rotterdam, The Netherlands**

| | |
|----------------|--|
| Location | Rotterdam, The Netherlands |
| Plant | Conveying equipment |
| Plant capacity | 50 Mg/h |
| Commissioning | 2002 |
| Client | Rentec, Pittem, Belgium for AVR, Rotterdam, The Netherlands |

Gipswerke **Lochau, Germany**

| | |
|----------------|--|
| Location | Lochau, Saxony-Anhalt, Germany |
| Plant | Conveying equipment |
| Plant capacity | 380 Mg/h |
| Commissioning | 1998 |
| Client | Gipswerke Lochau, Döllnitz, Germany |

OUR LOCATIONS WE GET THE BEST OUT

SUTCO® RECYCLINGTECHNIK GMBH

Paffrather Straße 102-116
51465 Bergisch Gladbach
Germany

info@sutco.de

SUTCO® UK LTD.

Palmerston House
814 Brighton Road
Purley, Surrey CR8
United Kingdom

info@sutco-uk.com

SUTCO BRASIL LTDA.

Av. Ana Costa, nº 61, terreo, sala 22
Bairro Gonzaga, Santos, SP
CEP 11.060-001
Brasil

info@sutco.com.br

SUTCO® SWEDEN AB

c/o Rödl & Partner Nordic AB
Jungmansgatan 12
211 11 Malmö
Sweden

info@sutco.de

SUTCO® POLSKA

Spółka z o.o., ul. Hutnicza 10
40-241 Kattowice
Poland

info@sutco.pl

SUTCO® IBÉRICA RECYCLING TECHNOLOGY S.L.

Avda. Diagonal 463 BIS, 7º, 2ª
08036 Barcelona
Spain

info@sutco.es

SUTCO SINGAPORE PTE. LTD.

4 Battery Road # 25-01
Bank of China Building
Singapore, 049908
Singapore

info@sutco.de

SUTCO® RECYCLING TECHNOLOGY ROMANIA SRL.

Str. Gheorghe Țițeica, Nr 121C, Etaj 3
Sector 2, Bucharest
Romania, Post Cod: 020295

info@sutco.ro



WWW.SUTCO.COM

